

GRACE

EMMANUEL GALLINA (2009)



DESCRIPTION

The chair as aesthetic element always in line with the most current trends of living. A declaration of style confirmed by Grace chair by Emmanuel Gallina.

Poliform

GRACE

EMMANUEL GALLINA (2009)



TECHNICAL DESCRIPTION

TPOLOGY

chair

BASE

in solid wood

Backrest

multi-density flexible moulded polyurethane

FINAL COVER

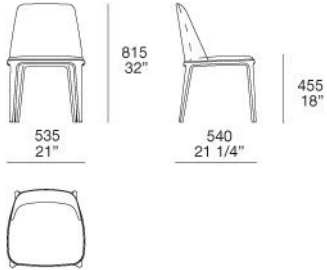
not removable in fabric, leather or woven leather

Poliform

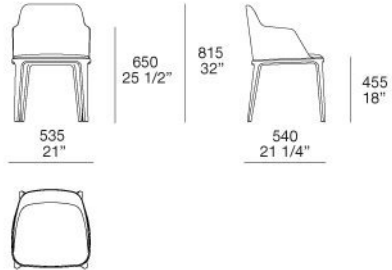
GRACE

EMMANUEL GALLINA (2009)

S85

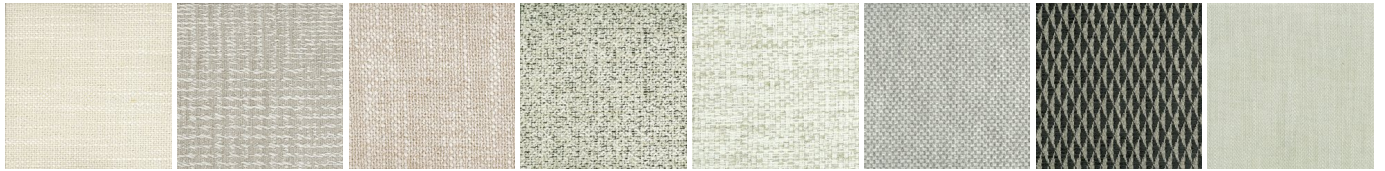


S85B



GRACE

FINISHINGS\SEAT\FABRIC (35)



KUSHIRO

SENDAI

NAYORO

KITAMI

CHIOS

ARGO

CORINTO

ITACA



MILOS

OLIMPIA

PAROS

ZANTE

SPARTA

SALFORD

ORLEANS

OXFORD



PERSIA

RABAT

MERIDA

HANNOVER

CORDOBA

CALEDONIA

NORWAY

ASPEN



ATLANTA

BERLINO

KYOTO

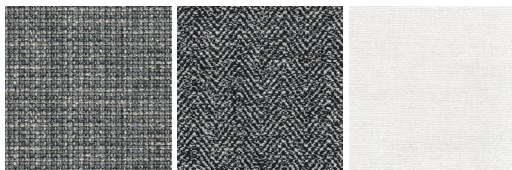
LIMA

MELBOURNE

PORTO

SIVIGLIA

INDRA



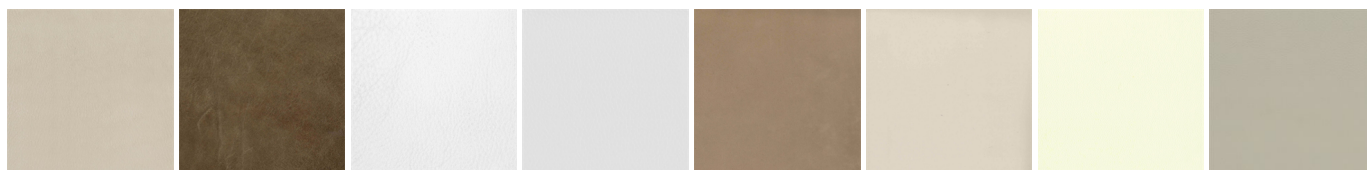
LIPSI

SKYROS

NAXOS

GRACE

FINISHINGS\SEAT\LEATHER (8)



NABUK
LEATHER

VINTAGE
LEATHER

SUPER
LEATHER

PELLE
SPECIAL

AGED-
LOOKING
LEATHER

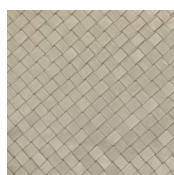
COLORS
LEATHER

SPRING
LEATHER

SOFT
LEATHER

GRACE

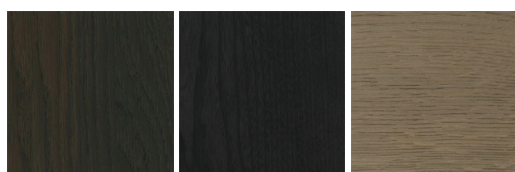
FINISHINGS\SEAT\WOVEN LEATHER (1)



WAVED
LEATHER

GRACE

FINISHINGS\STRUCTURE\WOODS (3)



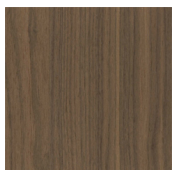
SPESSART
OAK

BLACK ELM

CENERO OAK

GRACE

FINISHINGS\STRUCTURE\WALNUT - C (1)



WALNUT C.